



2022-23 Suspension/Expulsion Summary Report

Omaha Public Schools provides positive school environments where students feel connected and safe. Staff model behavior that builds positive relationships, resolves conflict, and ensures support for the whole child. OPS implements Multi-Tiered Systems of Support for Behavior (MTSS-B) to promote student use of positive behavior. Through this framework, OPS has committed to providing staff with tools and resources to positively engage students and families through implementation of school-wide positive behavior interventions. All students are taught positive behavior expectations for school, fostering responsibility for themselves and their actions while encouraging positive contributions. These expectations are reinforced through schoolwide systems and tiered intervention.

The Student Code of Conduct is designed to support a school setting conducive to teaching and learning by developing appropriate student behavior patterns through reasonable and consistent practices. The violations outlined in the Code also serve as a notification function of student due process. Common district-wide behavior and discipline expectations from teachers and administrative staff serve as a learning experience for students. The Student Code of Conduct applies to all students attending Omaha Public Schools and encompasses conduct on school grounds, in remote learning environments, on Omaha Public Schools owned computers and digital devices, in vehicles owned, leased, or contracted by a school or the district used for school purposes, or in vehicles being driven for school purposes by a school employee or designee, as well as at school-sponsored activities or athletic events. When responding to behavior concerns and assigning disciplinary actions, school leaders consider a student's age, development, intent, and individual needs, among other factors. Compliance with the Student Code of Conduct is expected of all students.

Omaha Public Schools reports student-level discipline directly to the Nebraska Department of Education (NDE) using the ADVISER Operational Data Store to meet state reporting requirements. This report summarizes district-level information reported to NDE for the Report of Suspension and Expulsions and provides trend data where available. Due to COVID-19, in-person instruction was suspended in March of 2020. Additionally, the 2020-21 school year was comprised of a mix of remote learning and in-person learning for all students. As a result, statistics reported for the 2019-20 and 2020-21 school years were impacted and should be compared to other school years with caution.

Reporting Notes

This report groups and describes students in elementary school (K-5), middle school (6-8), and high school (9-12) grade groups for a consistent understanding of trends across the last five school years. About 15% of grade five students have been enrolled at a middle school and one third of grade six students were enrolled at an elementary school between 2018-19 and 2022-23. Beginning in the 23-24 school year, all grade five students will be enrolled at an elementary school and only about 16% of grade six students will still be enrolled at an elementary school. Early childhood students have been excluded from these tables because of the extremely small number of these students who experience exclusionary discipline like suspensions and expulsions. In general, exclusionary discipline is not recommended for our youngest learners and is rarely used. During the 2022-23 school year, only three

early childhood students experienced an in-school or out-of-school suspension out of more than 2,500 students. In the previous four school years, an average of three early childhood students experienced in-school or out-of-school suspension. Including all early childhood students in the membership totals of the tables in this report would artificially decrease the rates presented. Furthermore, beginning in the 2023-24 school year, state legislation will restrict the use of in-school and out-of-school suspensions to students in grades 3-12.

The use of official membership as the denominator in the calculations throughout this report likely inflates suspension rates. While 49,303 kindergarten through twelfth grade students are counted as being enrolled as of October 1 in the 2022-23 school year, more than 52,000 individual students were enrolled across the school year. Some of these additional 2,700 students experienced the reported discipline and are not counted in the official membership denominator.

Suspension Summary

The following table illustrates both the number of unique students who were suspended during the school year as well as the total number of suspensions that occurred during each of the past five school years by grade level. Suspensions have been split into out-of-school and in-school suspensions to show the unique count of students relative to official membership for each category. A student can be represented in both in-school and out-of-school suspension columns. The total number of suspensions on the far right is a combined total number of in-school (ISS) and out-of-school (OSS) suspensions. For example, if a student has three in-school suspensions and one out-of-school suspension they would be counted once in the out-of-school column and once in the in-school suspension column but contribute four suspensions to the total number of suspensions over the school year.

During the 2022-23 school year, students in middle school grades had the highest rate of in-school (17.3%) or out-of-school (23.7%) suspension. At the high school level, 11.4% of students experienced in-school suspension and 15.6% experienced out-of-school suspension. Students in elementary school grades had the lowest percentage of students experiencing suspension, where only 0.8% of students experienced an in-school suspension and 6.4% experienced an out-of-school suspension. At all grade levels, in-school suspension rates decreased to some of the lowest in the last five years (excluding 2020-21) while out-of-school rates increased to the highest. This suggests an overall reduction in the use of in-school suspensions and an increase in out-of-school suspensions during the 2022-23 school year. These grade level differences have remained consistent over the past five years, apart from the 2020-21 school year, which saw unique disruptions due to the pandemic.

Table 1: Out-of-School (OSS) and In-School Suspensions (ISS) by Grade Level: 2018-19 to 2022-23

Suspensions: Grades K - 5						
	Student Membership	Unique Students with Out-of-School Suspension	% of Group	Unique Students with In-School Suspension	% of Group	Total Suspension Incidents
2022-23	22,856	1,454	6.4%	191	0.8%	3,203
2021-22	22,579	1,178	5.2%	236	1.0%	2,680
2020-21	22,851	443	1.9%	359	1.6%	1,389
2019-20	23,988	1,096	4.6%	1,262	5.3%	5,181
2018-19	24,397	1,330	5.5%	1,556	6.4%	7,202
Suspensions: Grades 6 - 8						
	Student Membership	Unique Students with Out-of-School Suspension	% of Group	Unique Students with In-School Suspension	% of Group	Total Suspension Incidents
2022-23	11,042	2,621	23.7%	1,908	17.3%	11,769
2021-22	11,448	2,420	21.1%	1,953	17.1%	11,817
2020-21	11,325	713	6.3%	989	8.7%	2,900
2019-20	11,413	1,960	17.2%	2,257	19.8%	12,203
2018-19	11,223	2,160	19.2%	2,429	21.6%	14,203
Suspensions: Grades 9 - 12						
	Student Membership	Unique Students with Out-of-School Suspension	% of Group	Unique Students with In-School Suspension	% of Group	Total Suspension Incidents
2022-23	15,405	2,408	15.6%	1,758	11.4%	10,146
2021-22	14,982	2,036	13.6%	1,755	11.7%	8,954
2020-21	15,221	466	3.1%	554	3.6%	1,598
2019-20	15,301	2,067	13.5%	2,029	13.3%	9,379
2018-19	14,906	2,127	14.3%	2,332	15.6%	11,342
Suspensions: Grades K-12						
	Student Membership	Unique Students with Out-of-School Suspension	% of Group	Unique Students with In-School Suspension	% of Group	Total Suspension Incidents
2022-23	49,303	6,483	13.1%	3,856	7.8%	25,118
2021-22	49,009	5,634	11.5%	3,944	8.0%	23,451
2020-21	49,397	1,622	3.3%	1,902	3.9%	5,887
2019-20	50,702	5,123	10.1%	5,548	10.9%	26,763
2018-19	50,526	5,617	11.1%	6,317	12.5%	32,747

Out-of-School Suspension Trends

The following charts illustrate the 5-year trend in the total number of individual students who experienced an out-of-school or in-school suspension as a percentage of official fall membership. The percentage of students experiencing an out-of-school suspension has increased at all grade groups compared to pre-pandemic levels in 2018-19. In 2018-19, 11.1% of all K-12 students experienced an out-of-school suspension compared to 13.2% in 2022-23. Students in middle school grades have experienced the highest rates of out-of-school suspensions over the last five years increasing from 19.2% in 2018-19 to 23.7% in 2022-23, an increase of 4.5%. The rate of high school and elementary school students experiencing an out-of-school suspension also increased by about 1% over the last five years.

Conversely, the rate of K-12 students experiencing an in-school suspension has decreased from 12.5% in 2018-19 to 7.8% in 2022-23. Middle school students experienced the highest rates of in-school suspensions over the last five years but decreased from 21.6% in 2018-19 to 17.3% in 2022-23. High school students experienced similar declines in the rate of in-school suspensions from 2018-19 to 2022-23 while the rate of students receiving an in-school suspension at elementary grades decreased to under 1% in 2022-23.

Chart 1: Percent of Students Suspended Out-of-School: 5-Year Trend

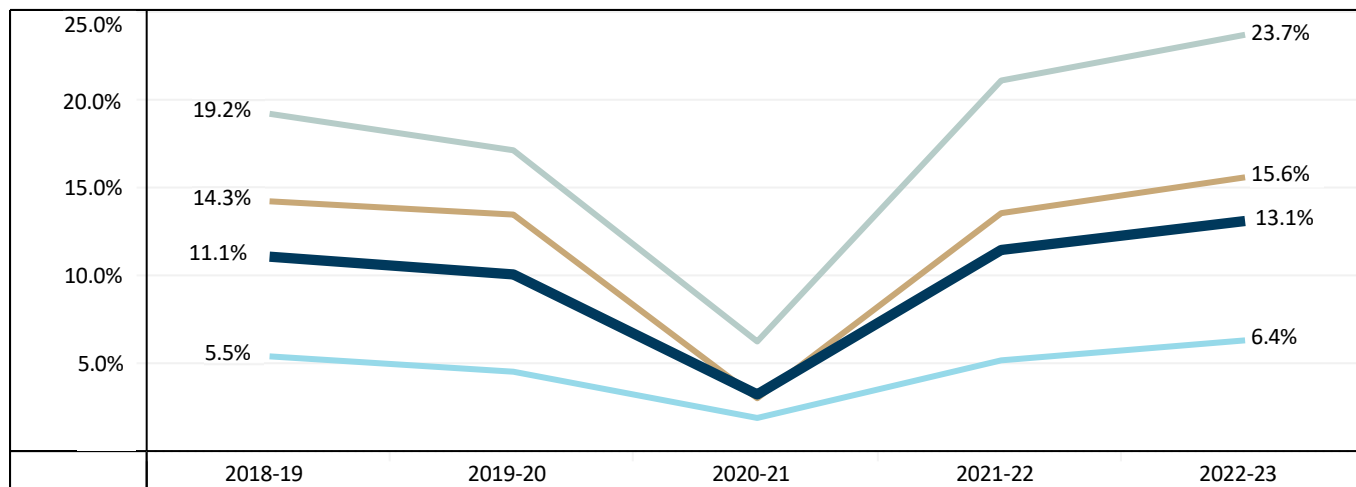
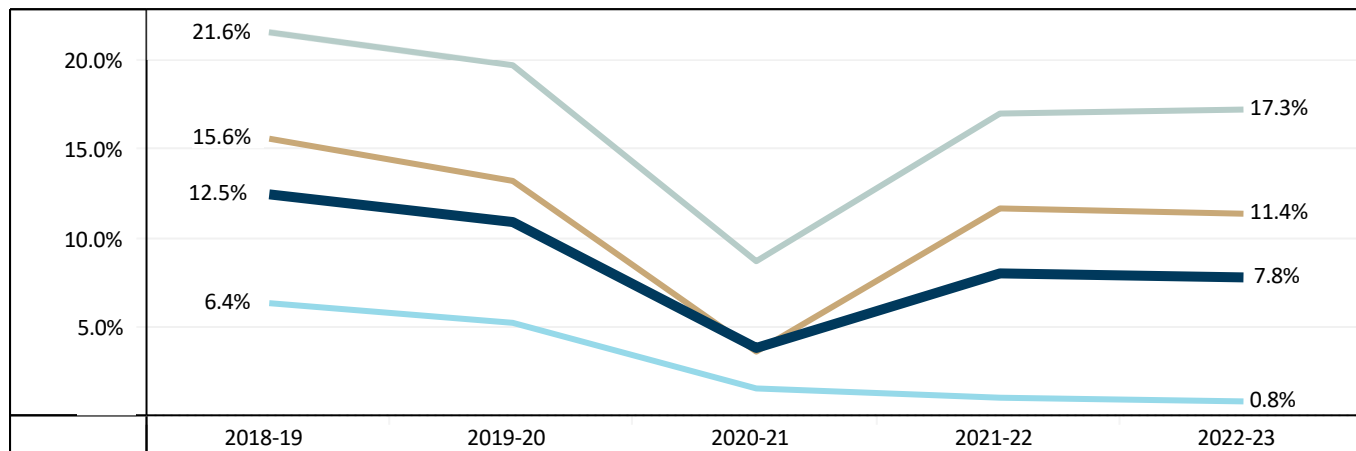


Chart 2: Percent of Students Suspended In-School: 5-Year Trend



Elementary (K-5)

Middle (6-8)

High (9-12)

All Grades

Expulsions

The table below illustrates both the number of unique students who were expelled during the school year as well as the total number of expulsions that occurred during each of the past five school years by grade group. Much like suspensions, most expulsions are concentrated at the middle and high school grades. Elementary students seldom face expulsion, mainly due to the stringent criteria required for such disciplinary action. Over the last five years, no elementary grade students have experienced an expulsion. At the high school level, 2% of students experienced an expulsion in 2022-23. This percentage has remained relatively consistent over the last five years. The rate of expulsions for students in middle school grades increased to 1.4% in 2022-23 after averaging around 1% over the previous four years.

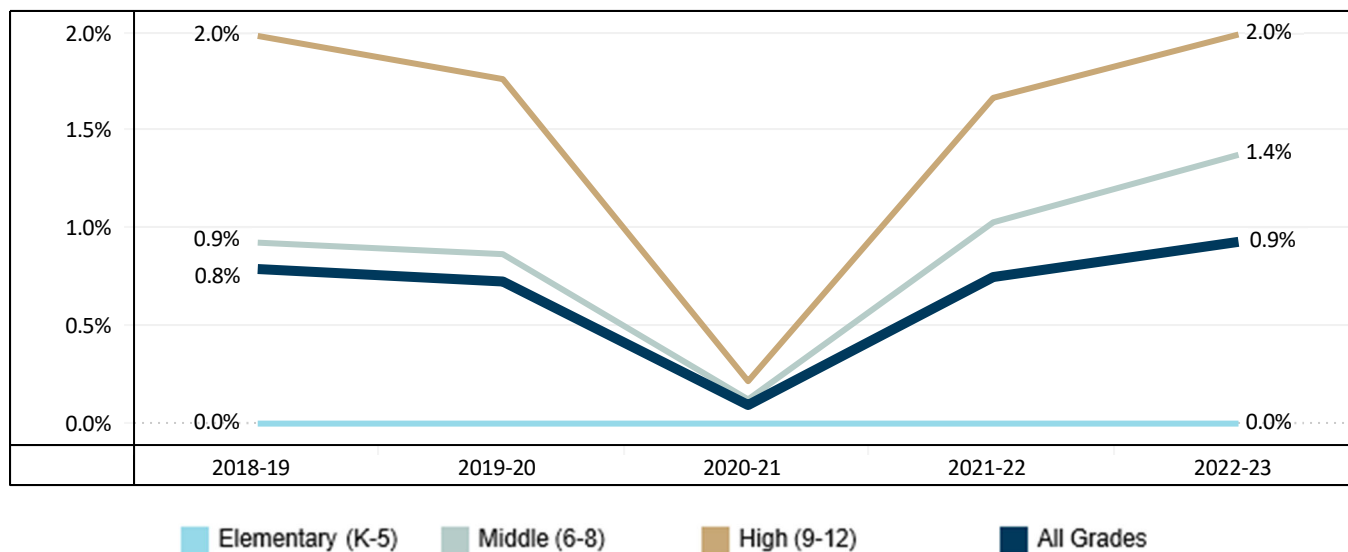
Table 2: Expulsions by Grade Level: 2018-19 to 2022-23

Expulsions: Grades K - 5				
	Student Membership	Unique Students Expelled	% of Group	Total Expulsion Incidents
2022-23	22,856	0	0.0%	0
2021-22	22,579	0	0.0%	0
2020-21	22,851	0	0.0%	0
2019-20	23,988	0	0.0%	0
2018-19	24,397	0	0.0%	0
Expulsions: Grades 6 - 8				
	Student Membership	Unique Students Expelled	% of Group	Total Expulsion Incidents
2022-23	11,042	152	1.4%	156
2021-22	11,448	118	1.0%	128
2020-21	11,325	14	0.1%	14
2019-20	11,413	99	0.9%	100
2018-19	11,223	104	0.9%	110
Expulsions: Grades 9 - 12				
	Student Membership	Unique Students Expelled	% of Group	Total Expulsion Incidents
2022-23	15,405	307	2.0%	320
2021-22	14,982	250	1.7%	259
2020-21	15,221	33	0.2%	33
2019-20	15,301	270	1.8%	275
2018-19	14,906	296	2.0%	305
Expulsions: Grades K-12				
	Student Membership	Unique Students Expelled	% of Group	Total Expulsion Incidents
2022-23	49,303	459	0.9%	476
2021-22	49,009	368	0.8%	387
2020-21	49,397	47	0.1%	47
2019-20	50,702	369	0.7%	375
2018-19	50,526	400	0.8%	415

Expulsion Trends

The following chart illustrates the 5-year trend in the number of students who were expelled as a percentage of official fall membership. Between 2021-22 and 2022-23, expulsion rates increased at all levels except for elementary school where the rate remains at zero. High school rates in 2022-23 matched the previous high over the last five years at 2.0%. The percentage of middle school grade students facing expulsion has also increased to 1.4%, the highest rate in the last five years. Furthermore, the district-level rate of expulsions has risen to 0.9%, surpassing the rate recorded in 2018-19.

Chart 3: Percent of Students Expelled: 5-Year Trend



Suspensions and Expulsions by Race/Ethnicity

The following tables detail suspension and expulsion rates by race/ethnicity at the elementary, middle, and high school levels, as well as for the district. The tables contain the total number of district students in each racial/ethnic group from official membership, as well as the unique number of students suspended (out-of- and in-school) or expelled at least once in each group. The tables also contain the racial and ethnic group representation of all suspended or expelled students (% of OSS/ISS/Exp) that can be compared to the representation of that group in the overall population. Additionally, the percentage of each racial and ethnic group that experienced a suspension or expulsion (% of Group) provides a way to compare groups to each other to determine the relative likelihood that the discipline would be applied to a member of that group. The data indicate that Black or African American, American Indian, or Alaska Native, and students or two or more races account for a disproportionate percentage of suspended and expelled students relative to their demographic representation in the district. Almost 26% of all Black or African American students experienced an out-of-school suspension in 2022-23 followed by American Indian or Alaska Native (17.7%) and students who are two or more races (16.4%). These findings are consistent across all grade levels and suggest that students in these groups are more likely than other racial or ethnic groups to experience an out-of-school suspension and expulsion.

Table 3: Suspensions and Expulsions by Race/Ethnicity

Students Suspended or Expelled by Race/Ethnicity (Grades K-5): 2022-23											
	Demographic Representation		Unique Students with Out-of-School Suspension (OSS)			Unique Students with In-School Suspension (ISS)			Unique Students Expelled (Exp)		
	N	%	N	% of OSS	% of Group	N	% of ISS	% of Group	N	% of Exp	% of Group
Black or African American	5,238	22.9%	721	49.6%	13.8%	92	48.2%	1.8%	0	0.0%	0.0%
Asian	1,707	7.5%	32	2.2%	1.9%	4	2.1%	0.2%	0	0.0%	0.0%
White	5,385	23.6%	261	18.0%	4.8%	38	19.9%	0.7%	0	0.0%	0.0%
Hispanic	8,750	38.3%	291	20.0%	3.3%	41	21.5%	0.5%	0	0.0%	0.0%
American Indian or Alaska Native	157	0.7%	16	1.1%	10.2%	0	0.0%	0.0%	0	0.0%	0.0%
Native Hawaiian or Pacific Islander	31	0.1%	1	0.1%	3.2%	0	0.0%	0.0%	0	0.0%	0.0%
Two or More Races	1,588	7.0%	132	9.1%	8.3%	16	8.4%	1.0%	0	0.0%	0.0%
Students Suspended or Expelled by Race/Ethnicity (Grades 6-8): 2022-23											
	Demographic Representation		Unique Students with Out-of-School Suspension (OSS)			Unique Students with In-School Suspension (ISS)			Unique Students Expelled (Exp)		
	N	%	N	% of OSS	% of Group	N	% of ISS	% of Group	N	% of Exp	% of Group
Black or African American	2,733	24.8%	1,151	43.9%	42.1%	981	51.4%	35.9%	68	44.7%	2.5%
Asian	788	7.1%	89	3.4%	11.3%	69	3.6%	8.8%	7	4.6%	0.9%
White	2,409	21.8%	398	15.2%	16.5%	277	14.5%	11.5%	18	11.8%	0.7%
Hispanic	4,324	39.2%	759	29.0%	17.6%	405	21.2%	9.4%	42	27.6%	1.0%
American Indian or Alaska Native	82	0.7%	25	1.0%	30.5%	23	1.2%	28.0%	4	2.6%	4.9%
Native Hawaiian or Pacific Islander	14	0.1%	2	0.1%	14.3%	0	0.0%	0.0%	1	0.7%	7.1%
Two or More Races	692	6.3%	197	7.5%	28.5%	153	8.0%	22.1%	12	7.9%	1.7%
Students Suspended or Expelled by Race/Ethnicity (Grades 9-12): 2022-23											
	Demographic Representation		Unique Students with Out-of-School Suspension (OSS)			Unique Students with In-School Suspension (ISS)			Unique Students Expelled (Exp)		
	N	%	N	% of OSS	% of Group	N	% of ISS	% of Group	N	% of Exp	% of Group
Black or African American	3,868	25.1%	1,175	48.8%	30.4%	777	44.2%	20.1%	176	57.3%	4.6%
Asian	938	6.1%	62	2.6%	6.6%	41	2.3%	4.4%	5	1.6%	0.5%
White	3,524	22.9%	341	14.2%	9.7%	252	14.3%	7.2%	25	8.1%	0.7%
Hispanic	6,149	39.9%	631	26.2%	10.3%	548	31.2%	8.9%	68	22.1%	1.1%
American Indian or Alaska Native	128	0.8%	24	1.0%	18.8%	15	0.9%	11.7%	5	1.6%	3.9%
Native Hawaiian or Pacific Islander	19	0.1%	3	0.1%	15.8%	2	0.1%	10.5%	1	0.3%	5.3%
Two or More Races	779	5.1%	172	7.1%	22.1%	123	7.0%	15.8%	27	8.8%	3.5%
Students Suspended or Expelled by Race/Ethnicity (Grades K-12): 2022-23											
	Demographic Representation		Unique Students with Out-of-School Suspension (OSS)			Unique Students with In-School Suspension (ISS)			Unique Students Expelled (Exp)		
	N	%	N	% of OSS	% of Group	N	% of ISS	% of Group	N	% of Exp	% of Group
Black or African American	11,839	24.1%	3,047	47.0%	25.7%	1,849	47.9%	15.6%	244	53.2%	2.1%
Asian	3,433	7.0%	183	2.8%	5.3%	114	3.0%	3.3%	12	2.6%	0.3%
White	11,318	23.0%	1,000	15.4%	8.8%	567	14.7%	5.0%	43	9.4%	0.4%
Hispanic	19,223	39.0%	1,681	25.9%	8.7%	994	25.8%	5.2%	110	24.0%	0.6%
American Indian or Alaska Native	367	0.7%	65	1.0%	17.7%	38	1.0%	10.4%	9	2.0%	2.5%
Native Hawaiian or Pacific Islander	64	0.1%	6	0.1%	9.4%	2	0.1%	3.1%	2	0.4%	3.1%
Two or More Races	3,059	6.2%	501	7.7%	16.4%	292	7.6%	9.5%	39	8.5%	1.3%

Suspensions and Expulsions by Student Group

The following tables detail suspension and expulsion rates by gender, educational benefit eligibility, special education status, and English Learner (EL) status at the elementary, middle, and high school grade levels, as well as for the district. The tables contain the total number of students in each group from official membership, as well as the unique number of students suspended (out-of- and in-school) or expelled at least once in each group. The tables also contain the group representation of all suspended or expelled students (% of OSS/ISS/Exp) that can be compared to the representation of that group in the overall population. Additionally, the percentage of each group that experienced a suspension or expulsion (% of Group) provides a way to compare groups to each other to determine the relative likelihood that the discipline would be applied to a member of that group.

The data indicate that male students are about 50% more likely than females to experience an out-of-school suspension and slightly more likely to be expelled. Students eligible for educational benefits are almost three times as likely to experience an out-of-school suspension compared to students who are not eligible. Special Education students are about twice as likely to receive an out-of-school suspension or expulsion compared to their non-special education peers, while current English Learners are less likely to be suspended or expelled than non-English learners. These trends are relatively consistent across grade levels.

Table 4: Suspensions and Expulsions by Subgroup (Gender, Lunch Status, Special Education, and EL)

Students Suspended or Expelled by Subgroup (Grades K-5): 2022-23											
	Demographic Representation		Unique Students with Out-of-School Suspension (OSS)			Unique Students with In-School Suspension (ISS)			Unique Students Expelled (Exp)		
	N	%	N	% of OSS	% of Group	N	% of ISS	% of Group	N	% of Exp	% of Group
Male	11,618	50.8%	1,074	73.9%	9.2%	131	68.6%	1.1%	0	0.0%	0.0%
Female	11,238	49.2%	380	26.1%	3.4%	60	31.4%	0.5%	0	0.0%	0.0%
Eligible for Ed. Benefits	15,687	68.6%	1,276	87.8%	8.1%	159	83.2%	1.0%	0	0.0%	0.0%
No Data & Not Eligible (Ed. Ben.)	7,169	31.4%	178	12.2%	2.5%	32	16.8%	0.4%	0	0.0%	0.0%
Special Education	3,761	16.5%	455	31.3%	12.1%	50	26.2%	1.3%	0	0.0%	0.0%
Not Special Education	19,095	83.5%	1,040	71.5%	5.4%	141	73.8%	0.7%	0	0.0%	0.0%
English Learner	7,094	31.0%	194	13.3%	2.7%	27	14.1%	0.4%	0	0.0%	0.0%
Not English Learner	15,762	69.0%	1,260	86.7%	8.0%	164	85.9%	1.0%	0	0.0%	0.0%
Students Suspended or Expelled by Subgroup (Grades 6-8): 2022-23											
	Demographic Representation		Unique Students with Out-of-School Suspension (OSS)			Unique Students with In-School Suspension (ISS)			Unique Students Expelled (Exp)		
	N	%	N	% of OSS	% of Group	N	% of ISS	% of Group	N	% of Exp	% of Group
Male	5,662	51.3%	1,566	59.7%	27.7%	1,151	60.3%	20.3%	94	61.8%	1.7%
Female	5,380	48.7%	1,055	40.3%	19.6%	757	39.7%	14.1%	58	38.2%	1.1%
Eligible for Ed. Benefits	7,571	68.6%	2,226	84.9%	29.4%	1,613	84.5%	21.3%	138	90.8%	1.8%
No Data & Not Eligible (Ed. Ben.)	3,471	31.4%	396	15.1%	11.4%	296	15.5%	8.5%	14	9.2%	0.4%
Special Education	2,085	18.9%	718	27.4%	34.4%	502	26.3%	24.1%	46	30.3%	2.2%
Not Special Education	8,957	81.1%	1,967	75.0%	22.0%	1,443	75.6%	16.1%	106	69.7%	1.2%
English Learner	1,597	14.5%	309	11.8%	19.3%	185	9.7%	11.6%	19	12.5%	1.2%
Not English Learner	9,445	85.5%	2,312	88.2%	24.5%	1,723	90.3%	18.2%	133	87.5%	1.4%

Students Suspended or Expelled by Subgroup (Grades 9-12): 2022-23											
	Demographic Representation		Unique Students with Out-of-School Suspension (OSS)			Unique Students with In-School Suspension (ISS)			Unique Students Expelled (Exp)		
	N	%	N	% of OSS	% of Group	N	% of ISS	% of Group	N	% of Exp	% of Group
Male	7,862	51.0%	1,357	56.4%	17.3%	1,012	57.6%	12.9%	185	60.3%	2.4%
Female	7,543	49.0%	1,051	43.6%	13.9%	746	42.4%	9.9%	122	39.7%	1.6%
Eligible for Ed. Benefits	9,776	63.5%	2,005	83.3%	20.5%	1,448	82.4%	14.8%	274	89.3%	2.8%
No Data & Not Eligible (Ed. Ben.)	5,629	36.5%	403	16.7%	7.2%	310	17.6%	5.5%	33	10.7%	0.6%
Special Education	2,807	18.2%	726	30.1%	25.9%	478	27.2%	17.0%	95	30.9%	3.4%
Not Special Education	12,598	81.8%	1,735	72.1%	13.8%	1,311	74.6%	10.4%	212	69.1%	1.7%
English Learner	2,076	13.5%	211	8.8%	10.2%	203	11.5%	9.8%	23	7.5%	1.1%
Not English Learner	13,329	86.5%	2,197	91.2%	16.5%	1,555	88.5%	11.7%	284	92.5%	2.1%

Students Suspended or Expelled by Subgroup (All Students): 2022-23											
	Demographic Representation		Unique Students with Out-of-School Suspension (OSS)			Unique Students with In-School Suspension (ISS)			Unique Students Expelled (Exp)		
	N	%	N	% of OSS	% of Group	N	% of ISS	% of Group	N	% of Exp	% of Group
Male	25,142	51.0%	3,997	61.7%	15.9%	2,293	59.5%	9.1%	279	60.8%	1.1%
Female	24,161	49.0%	2,486	38.3%	10.3%	1,563	40.5%	6.5%	180	39.2%	0.7%
Eligible for Ed. Benefits	33,034	67.0%	5,507	84.9%	16.7%	3,219	83.5%	9.7%	412	89.8%	1.2%
No Data & Not Eligible (Ed. Ben.)	16,269	33.0%	977	15.1%	6.0%	638	16.5%	3.9%	47	10.2%	0.3%
Special Education	8,653	17.6%	1,899	29.3%	21.9%	1,030	26.7%	11.9%	141	30.7%	1.6%
Not Special Education	40,650	82.5%	4,742	73.1%	11.7%	2,895	75.1%	7.1%	318	69.3%	0.8%
English Learner	10,767	21.8%	714	11.0%	6.6%	415	10.8%	3.9%	42	9.2%	0.4%
Not English Learner	38,536	78.2%	5,769	89.0%	15.0%	3,441	89.2%	8.9%	417	90.8%	1.1%

Behaviors Resulting in Suspensions and Expulsions

The following tables detail suspension and expulsion counts by the documented student behavior. While a disciplinary event can be the result of multiple student behaviors; suspension and expulsion resolutions should only be associated with the most severe behavior from the event in Infinite Campus. It is important to note that, while the code of conduct provides a framework for when it is appropriate to utilize suspensions and expulsions, each level, building, and staff member may process incidents and assign discipline resolutions differently.

At the elementary grade levels, out-of-school suspensions were most often assigned because of fighting (less-serious) and assault with no injury. Elementary in-school suspensions were most often the result of reckless behavior or assault with no injury. Out-of-school suspensions most often resulted from fighting (serious and non-serious) and reckless behavior at the middle school level. Middle school students often received an in-school suspension as the result of classroom disruption, reckless behavior, or insubordination. Finally, at the high school level, out-of-school suspensions often resulted from serious fighting or insubordination. In-school suspensions were most often applied to high school students because of truancy or insubordination. Expulsions were most often assigned because of an assault resulting with injury or weapon violations at both the middle and high school levels.

Table 5: Behaviors Resulting in Out-of-School Suspensions

Out-of-School Suspensions by Behavior Type				
Event Name	Elementary (K-5)	Middle (6-8)	High (9-12)	Total
Fighting, Serious	250	671	587	1,508
Reckless Behavior	256	555	517	1,328
Insubordination/Non-compliance with behavioral expecta..	92	368	822	1,282
Fighting, Less Serious	327	614	113	1,054
Refusal to Cooperate with School Administrative Staff	77	335	333	745
1A Drug, Possession or Under the Influence	10	266	445	721
Assault, No Injury	272	241	94	607
Classroom Disruption/Behavior Disruptive to the School ..	188	221	67	476
Assault with Injury (Intentional)	225	166	59	450
Disrespectful to Adults/Others	82	254	90	426
Threats or Intimidation	78	196	144	418
Tobacco/Vaping, Use of	32	144	141	317
Engaging in Verbal Conflict	8	135	147	290
Reckless Behavior Resulting in Personal Injury	96	123	40	259
Failure to Serve		87	149	236
Repeated Violations	56	131	38	225
5A Weapon (Other than firearm)	47	104	73	224
Violation of other Defined School Rules	22	43	133	198
Harassment	28	118	41	187
Misuse of Pass/Out of Area	9	56	60	125
Damage to School, Staff, or Student Property	36	55	22	113
Theft	11	60	42	113
Bullying	36	62	14	112
Truancy	3	40	46	89
Sexual Harassment	20	31	13	64
Unlawful Activity	2	25	37	64
Unauthorized Visit to Other Campuses		7	54	61
Vulgarity/Profanity	17	35	7	59
Inappropriate Language	25	26	4	55
Misuse of Computers, Digital Devices or Network	4	35	11	50
Alcohol, Possession/Use/Under the Influence		19	29	48
Possession of Non-School Related Item(s)	12	29	3	44
Unauthorized Use of Camera, Video/Recording Device, ..	3	24	7	34
2A Drug, Selling/Distribution		16	9	25
Possession of Obscene or Pornographic Literature, Mate..	4	15	5	24
Public Indecency		5	18	23
Exposure to Bodily Fluid	10	3	6	19
False Allegations Against Staff	4	7	3	14
Arson	3	7	3	13
False Alarm/Bomb Threat	2	5	5	12
Bullying Allegation	1	6	2	9
Bus Misconduct	3	5		8
Excessive Tardies/Hall Sweep		4	2	6
Alcohol, Selling/Distribution		3	1	4
3A Firearm			2	2
Absences Excessive			2	2
4A Serious Bodily Injury	1			1
Cheating/Plagiarizing	1			1
Inappropriate Clothing			1	1
No Behavior Event/Documentation		1		1

Table 6: Behaviors Resulting in In-School Suspensions

In-School Suspensions by Behavior Type				
Event Name	Elementary (K-5)	Middle (6-8)	High (9-12)	Total
Truancy	1	317	723	1,041
Insubordination/Non-compliance with behavioral exp...	10	477	375	862
Classroom Disruption/Behavior Disruptive to the School...	21	637	281	939
Disrespectful to Adults/Others	21	366	159	546
Misuse of Pass/Out of Area	8	250	333	591
Reckless Behavior	43	494	129	666
Excessive Tardies/Hall Sweep		119	293	412
Tobacco/Vaping, Use of	3	91	211	305
Failure to Serve		57	137	194
Inappropriate Language	1	78	32	111
Fighting, Less Serious	30	125	26	181
Engaging in Verbal Conflict	2	113	69	184
Assault, No Injury	40	41	6	87
Refusal to Cooperate with School Administrative Staff	5	54	38	97
Repeated Violations	3	50	13	66
Misuse of Computers, Digital Devices or Network	2	47	12	61
Damage to School, Staff, or Student Property	8	46	14	68
Harassment	3	47	11	61
Violation of other Defined School Rules		26	30	56
Vulgarity/Profanity	1	40	11	52
Theft		41	13	54
Threats or Intimidation	7	23	6	36
Unauthorized Use of Camera, Video/Recording Device, ..		13	8	21
Reckless Behavior Resulting in Personal Injury	7	24	3	34
Bullying	6	32	7	45
Possession of Non-School Related Item(s)	3	16	1	20
Bullying Allegation	4	12		16
Sexual Harassment	4	16	2	22
1A Drug, Possession or Under the Influence	1	11	10	22
Fighting, Serious		13	4	17
Bus Misconduct		4	8	12
Possession of Obscene or Pornographic Literature, Mate..		5	2	7
Assault with Injury (Intentional)	6	7	2	15
Inappropriate Clothing		2	2	4
Absences Excessive			4	4
2A Drug, Selling/Distribution		1	1	2
Unauthorized Visit to Other Campuses		1	5	6
Public Indecency		1	1	2
5A Weapon (Other than firearm)		3	1	4
No Behavior Event/Documentation		4	2	6
Unlawful Activity		2	1	3
Cheating/Plagiarizing	1	4	1	6
False Allegations Against Staff		3		3
False Alarm/Bomb Threat		1		1
Exposure to Bodily Fluid	1	1		2

Table 7: Behaviors Resulting in Expulsions

Expulsions by Behavior Type				
Event Name	Elementary (K-5)	Middle (6-8)	High (9-12)	Total
Assault with Injury (Intentional)		59	95	154
5A Weapon (Other than firearm)		46	66	112
Fighting, Serious		12	58	70
Reckless Behavior Resulting in Personal Injury		5	37	42
2A Drug, Selling/Distribution		10	11	21
Threats or Intimidation		4	20	24
3A Firearm		4	13	17
Unlawful Activity		4	5	9
1A Drug, Possession or Under the Influence		2	4	6
Reckless Behavior		1	1	2
False Alarm/Bomb Threat			3	3
Arson		4		4
Sexual Harassment		2		2
Theft			2	2
Alcohol, Selling/Distribution			2	2
Bullying		1		1